

## Solutions for specific products

Applications

**komax**



- |  |   |
|--|---|
| <ul style="list-style-type: none"> <li>1 Multi-pole conductor</li> <li>2 Terminal welding</li> <li>3 Ultrasonic welding</li> <li>4 Double crimp using ultrasonic welding</li> <li>5 Processing of solar conductor using resistance welding</li> <li>6 Demanding crimp connections</li> <li>7 Terminal laser-welding</li> </ul> | <ul style="list-style-type: none"> <li>8 Processing of insulated fiber-optic conductors</li> <li>9 Loading of two-pole housings</li> <li>10 Processing of coaxial cabling</li> <li>11 Processing of FAKRA cabling</li> <li>12 Processing of ground conductors</li> <li>13 Processing of IDC connectors</li> </ul> |
|--|---|

The processing of special conductors, contacts or housings and new types of processes require adaptations to the specific product involved. To meet this need, Komax creates new processing modules in close cooperation with the customer or adapts the functions of reliable modules already available.

In wire processing, there is always a great need for complex processing applications. A competent team of experts at Komax addresses this need with flexible basic machines and smart software plus processing modules and individual application parts.

#### **Basic machines**

Komax has a broad range of standard Komax machines with uniform platforms that serve as a basis for adding customized extensions tailored to customer requirements.

The customer benefits from the main functions in the basic machine. That has a positive effect on costs and technical maintenance while minimizing the process risk. The basic machine can also be modified to accommodate additional applications.

## Processing modules

Besides offering an entire series of reliable application modules, Komax can also adapt a module or expand its functions to meet specific needs. Our engineering team can also develop new modules for performing a given task.

Komax basic machines have open interfaces, so it is easy to integrate processing modules for welding, compacting, soldering, etc. already available on the market into them.



▲ **Application parts** for specific products

## Application parts

Komax also has a wide variety of application parts adapted to the various processing modules. From wire guides and straightening units to the most varied measuring instruments and gripper jaws, even complete wire deposit systems.

## Software

Software is crucial to the effective interplay of different hardware components. The Komax Generic Module software is a virtual tool that greatly simplifies the integration of modules, even non-Komax ones. Our team of software developers creates fast, lean solutions to fit the requirements and complexity of a given project.

### Power lines ▶

Shielded



### Special lines ▶

Data and signal lines



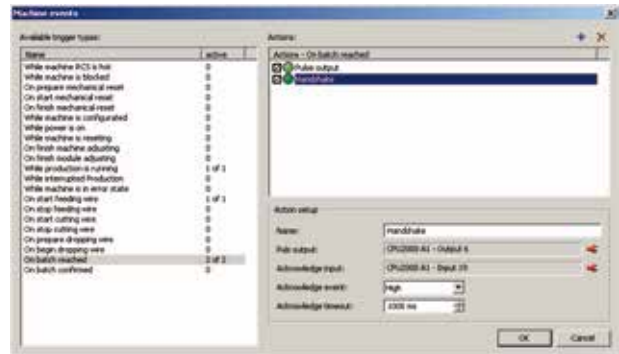
### Contact welding ▶



### IDC processing ▶



### Ultrasonic welding ▶



▲ **Software** Generic Module

## Your benefits

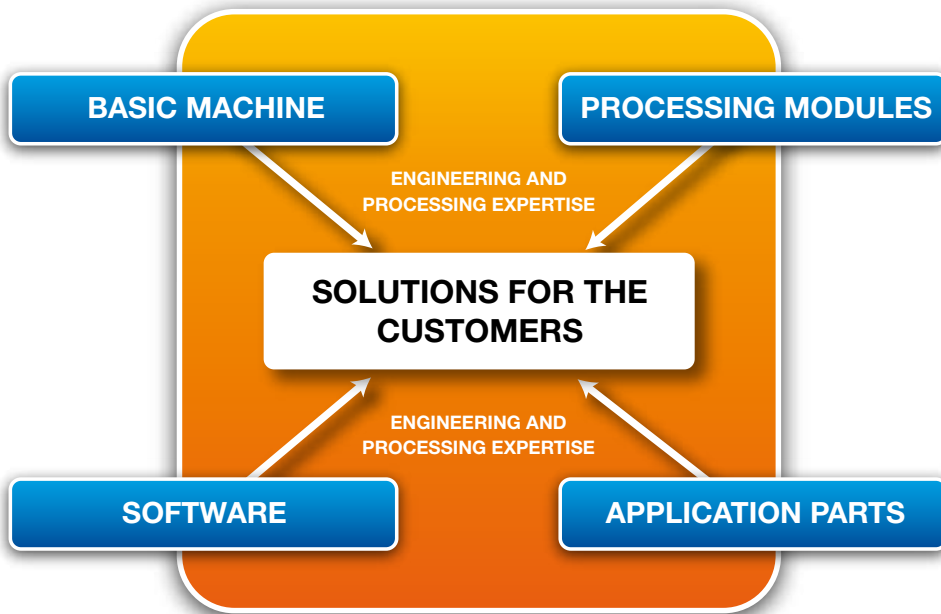
- Customized solutions to customer specification
- Minimized process risk thanks to the use of Komax standard machines
- Customer can continue using existing equipment
- Easy integration of non-Komax modules
- Professional project management
- Komax is your contact partner for total solutions
- Great experience and processing knowledge



▲ **Basic machine** Alpha 356



▲ **Basic machine** Zeta 640/650



### A strong team

To meet specific customer demands, the specialists at Komax conduct feasibility studies and then devise design proposals, functional modules and concept descriptions to go with them, including detailed bids. From test runs with customer materials to project realization, the customer can rest assured that the contract will be carried out in accordance with the agreed schedule. The team consists of mechanical, electronic, software and marketing experts with years of experience in wire processing and application engineering.

Contact us about your challenges.  
We are happy to advise you.