



40
YEARS
CUTTING
EDGE

Zeta 651

Block loading

komax WIRE



THE WAY TO MAKE IT | PROFITABLE

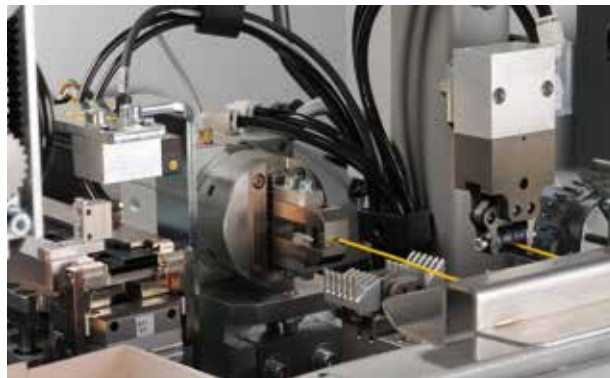
Together, the Zeta 633 and the Zeta 651 make a reliable and attractively priced complete solution for the single-sided loading of single and double row blocks. Single-sided loading has never been so efficient and economical.

Area of application

Teamed with the highly flexible Zeta 633 fully automatic crimping machine, the Zeta 651 can produce harnesses with single and double-row blocks using one-sided loading.

Technology

The Zeta 633 fully automatic crimping machine applies the loop transfer principle to feed the two wire ends of the loop individually one after the other to the appropriate processing station. With the Zeta 651, the contacts being loaded are mechanically centred prior to loading and optionally rotated, if need be. The use of the reliable loading head and the process monitoring systems of the Zeta 656 ensures optimum loading. The entire loading process is monitored, from block insertion in the chamber to correct locking. Blocks are fed automatically and can be replenished while the machine is running. Feed and deposit can be adapted to meet the respective needs of the specific customer.



▲ Positioning Contact centring and block feeding

Block feed

Blocks are automatically fed using a customer-specific vibratory bowl feeder or linear feeder. You can replenish them without interrupting processing while the machine is running.

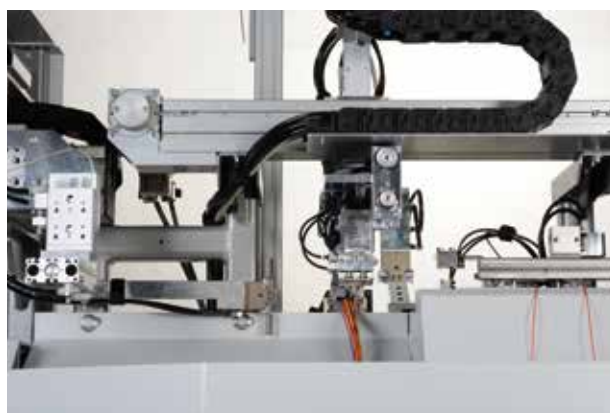


▲ Loading One-sided, double-row loading

Flexible basic machine

The Zeta 633 basic machine with integrated wire feed accommodates up to 36 wires without change-over.

Modules can be configured as desired along the entire length of the Zeta 633 machine. That means total flexibility for each area of application. If need be, the machine can be successively expanded and has space for up to thirteen processing stations.



▲ Positioning, loading, deposition

Wire deposition

The simple standard deposit system with integrated bad part cutter is used for depositing harnesses with short conductors. The long deposit system with batch separation and integrated bad part cutter is used for producing harnesses with long conductors up to 3000mm in length.



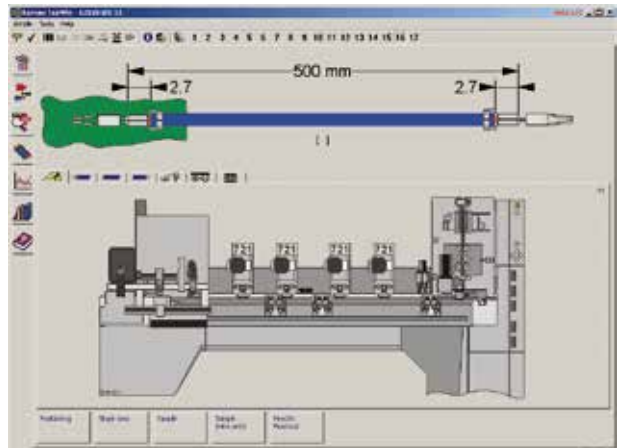
▲ **Deposit unit** Zeta 633/651 with deposit unit for conductors up to 3000mm in length



▲ **Deposit unit** Standard deposit unit for Zeta 633/651

Software

The TopWin graphical user interface is designed for quick and simple operation. The software upgrade for the Zeta 651 block loader covers all functions for the set-up and management of wire harnesses.



▲ **TopWin** Operating comfort and convenience with faithful replication

Your benefits:

- Fully automatic block loading
- Complete integration in TopWin
- Integrated process monitoring with good/bad separation
- Automatic block feeding
- Blocks can be replenished while machine is running
- Economical production of harnesses with one-sided loading

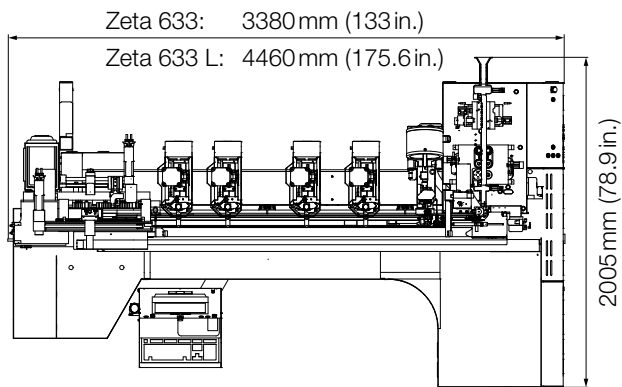
Processing examples on the Zeta 633/651



Options and accessories

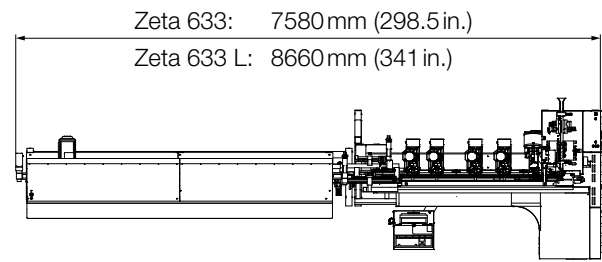
The Zeta 651 can be tailored to a customer's specific requirements by adding various types of accessories, e.g. block closing, secondary interlocking, etc. We are happy to send you a quotation addressing your specific requirements.

Standard machine layout with standard deposit unit



Height with cover closed: 1990 mm (78.4 in.)
Height with cover open: 2870 mm (113 in.)

Machine layout with 3 m deposit unit



Technical data

Piece output*	Single and double-row blocks: 1.8 s per loading operation 1.5 s block loading time
Length of processed wires	One-sided processing: 85 mm–3000 mm (3.35 in.–118 in.) Processing on both sides: 85 mm–110 mm (3.35 in.–4.3 in.) 240 mm–3000 mm (9.45 in.–118 in.)
Wire cross-sections**	0.22 mm ² –2.5 mm ² (AWG24–AWG14)
Outside diameter of wire	Maximum of 4 mm (0.16 in.)
Process monitoring (integrated)	Collision monitoring (block chambers) Monitoring of loading force Monitoring of contact interlocking
Block feed	Vibratory bowl feeder Linear rail Customer-specific solution on request
Wire deposit unit	Basic deposit unit for conductors up to 1000 mm (39.37 in.) in length Deposit unit for conductors up to 3000 mm (118 in.) in length Customer-specific solution on request
Electrical/pneumatic connection	Directly from the Zeta 633

* The output rate depends on the wire length and the combination of block and contact.

** Extremely hard and tough wires may not be able to be processed even though they are within the above cross section range. If you are in doubt about your wires, we are happy to process samples of them.

More information about our products:



www.komaxwire.com

Komax Wire is a division of Komax Holding AG, Switzerland